

## STAFF REPORT

**SUBJECT:** 2017 SJMSCP Annual Report Release

**RECOMMENDED ACTION:** Motion to Approve Release the Final Draft of 2017 SJMSCP Annual Report to U.S. Fish and Wildlife Service and California Fish and Wildlife Service Per Permitting and Plan Requirements

### DISCUSSION:

#### SUMMARY:

In accordance to Section 5.9.1 of the San Joaquin County Multi-Species Habitat Conservation and Open Space Plan (SJMSCP), SJCOG, Inc. is required to submit an *Annual Report* to the Permitting Agencies for the purpose of reporting acreage, type, and location of open space uses that are converted to non-open space uses, and an accounting of Preserve acres acquired pursuant to the SJMSCP. Through a Clerical Change in the SJMSCP in May 2006, the report must be submitted by April 1<sup>st</sup> of the year succeeding the calendar year in which the subject activities were conducted. The *2017 SJMSCP Annual Report* is a draft document which covers activities from January 1, 2017 to December 31, 2017.

#### RECOMMENDATION:

Motion to release the final draft of the 2017 SJMSCP Annual Report to the permitting agencies.

#### FISCAL IMPACT:

None

#### BACKGROUND:

An Executive Summary of the *2017 SJMSCP Annual Report* is provided in attachment 1. The entirety of the 2017 SJMSCP Annual Report can be requested in electronic format or found on the SJCOG website (<http://www.sjcog.org/DocumentCenter/View/3842>) under the Programs heading in the Habitat in the Plan Documents folder. The entire report is complete including all the reported calendar year acreage counts from the jurisdictions. The information in this report reflects accounting and activity that has been reported to staff through December 31, 2017.

There were minimal comments provided to staff on the initial draft provided at the February and March 2018 HTAC meetings.

The following is a summary of the various tables and important matters discussed in the annual report comprised of current year development impacts, carry-over mitigation, current mitigation due in 2017 from 2015 projects, acquisitions/dedications of mitigation lands and funding.

(full document available to public on-line or upon request)

- Development Impacts Covered by the SJMSCP in 2017 = **2,143.55 acres total** (*Table 2 and 3*)
  - Habitat Type Acreages = 202.08 Multi-Purpose, 1,550.44 AG, 91.38 Natural, 299.65 Urban
- Acquisitions/Dedications in 2017 (*Table 6*)
  - Agricultural Habitat Preserves = **618.52 acres** (Central and Delta Zones)
  - Cumulative SJMSCP Total Preserve Acres = 14,908.94 acres
- Habitat Acreage Impacts (Owed or Banked) to be Carried Over into start of 2018 (*Table 9-13*)
  - AG = **57.859** acres (Central Zone owed)
  - **120**+/- acres of other miscellaneous habitat types (All Zones Owed)
  - 312.66 acres of Grasslands (Southwest Zone Surplus Banked)
  - 20.85 acres of Riparian Forest (Central Zone Surplus Banked)
  - 8.29 acres of Freshwater Lake, Pond, Vernal Pool (Central Zone Surplus Banked)
- SJMSCP Funding (*Table 16 and 17*)
  - \$17,868,329 General Fund (obligated \$1,043,025 for last acquisition/endowment fund)
  - \$42,863,363 Endowment Funds

Pelegri Family Preserve (Old River)



Rustan Grassland Preserve



If approved by the SJCOG, Inc. Board for release to permitting agencies, our staff expects a joint comment response from USFWS and CDFW in June or July 2018. Those comments will be addressed in the yearly meeting expected to be scheduled thereafter.

## COMMITTEE ACTIONS:

- Habitat Technical Advisory Committee - Approved Recommendation
- Executive Committee – Information Only
- SJCOG, Inc. Board – Action Required

## ATTACHMENTS:

1. Executive Summary 2017 SJMSCP Annual Report

*Prepared by: Steven Mayo, Program Manager*

### 2017 SJMSCP Annual Report - Executive Summary

The 2017 San Joaquin County Multi-Species Habitat Conservation and Open Space Plan (SJMSCP) Annual Report is provided to meet the annual reporting requirement that is established in Section 5.9.1 of the SJMSCP. The intent of the Annual Report is to focus on the acreage, type, and location of open space use converted to non-open space use, and the accounting of preserve acres acquired pursuant to the SJMSCP.

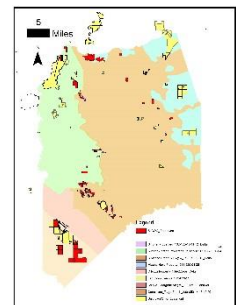
The Annual Report is comprised of four main sections: Conversions (Development), Conservation (Preserves), Funding, and SJMSCP Implementation. The Conversions (Development) section provides detailed information for projects that have participated in the SJMSCP. Such information includes habitat conversion type, impacts to SJMSCP Covered Species, and habitat mitigation requirements. The Conservation section will highlight preserve acquisitions in 2016 and provides information regarding the preserve jumpstart requirements. The Funding section details the revenues and expenditures for the reporting period. The SJMSCP Implementation section provides information regarding the overall implementation of the SJMSCP.

#### 1. Conversions (Development Activity)

In 2017, the total number of acres covered by the SJMSCP was **2,143.55 acres** of which 299.65 acres were urban habitat which required biological compliance but exempt mitigation requirements (fees or land dedication). In 2017, the total number of acres subject to fee assessment covered by the SJMSCP was **1,843.9 acres**. The “Authorized Take Coverage” is the total allowable acreage permitted by the Biological Opinion (B.O.) issued to the SJMSCP. In 2017, the SJMSCP covered **202.08 acres** of multi-purpose habitat, **1,550.44 acres** of agricultural habitat, **91.38 acres** of natural habitat, and **0.00 acres** of Vernal Pool habitat that were impacted throughout the year. The agricultural habitat land was the largest habitat type impacted during the year, with fees associated or not associated, converted for development in this past reporting period. A total of **1,550.44 acres** of agricultural habitat lands have been granted SJMSCP coverage which represents approximately **72.3%** of cumulative SJMSCP coverage for 2016 of the overall impacts this reporting year or approximately **884.1%** of the acreages covered with fees associated as mitigation under the plan. The predominant covered projects participating in the SJMSCP for 2017 were municipal and commercial development projects.

#### 2. Conservation (Preserves)

In 2017, SJCOG Inc. acquired additional **618.52 acres** of land placed under conservation easement to meet mitigation needs of the SJMSCP depicted in Table 6. The makeup of the acreage acquired over the reporting period was six (6) transactions as easement purchases of row and field crop in the Central and Delta Zones of **517.42 acres**. Another two (2) transaction was provided as easement dedication (Land-in-Lieu of fees) in the amount of **101.1 acres** of row and field crop in the Central Zone by developers. The current SJMSCP acquisitions reduced the total acres of mitigation carry-over from the prior year of row and field crop past due



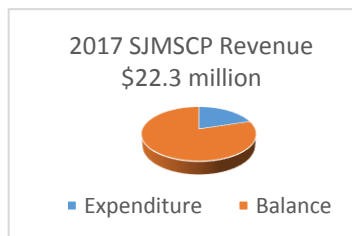
mitigation from **541.059 acres** to **57.859 acres** while meeting the required 2017 SJMSCP mitigation needs for most habitat types. In fact, there is an excess in some categories which will be used for future mitigation needs.

**Final 2017 Mitigation after SJCOG, Inc. Preserves and Banked Preserve Allotment (Table 13 of Report)**

Table 13

TYPE OF LAND	Central	Cen/SW	SW	Delta	Vernal Pool
Row & Field Crops (C34)	57.859	0.000	0.000	0.000	0.000
Ruderal (C5)	0.000	0.000	0.000	0.000	0.000
Drainage Ditch (D)	49.340	0.000	0.000	0.000	0.000
Valley Grasslands (G)	3.710	0.000	312.660	24.700	0.000
Foothill Grasslands (G2)	0.060	0.000	0.000	0.000	0.000
Vernal Pool Grasslands (G3)	0.000	0.000	0.000	0.000	0.915
Great Valley Riparian Forest ( R )	20.850	0.000	0.000	0.110	0.000
Great Valley Oak Riparian Forest (R2)	9.270	0.000	0.000	0.000	0.000
Mixed Oak Savanna (O/G)	9.770	0.000	0.000	0.000	0.850
River/Deep Water Channel (W)	0.000	29.940	0.120	0.000	0.000
Creek (W3)	4.940	3.020	4.830	0.000	0.000
Dead-End Slough (W4)	0.070	0.000	0.000	0.000	0.000
Freshwater Lake, Pond or Vernal Pool (W5)	8.290	20.520	0.210	0.000	0.000
Freshwater Emergent Wetland (W7)	0.000	0.000	0.000	0.000	0.000
Vernal or Seasonal Wetland (W8)	0.000	15.270	0.050	0.000	0.000
Canal (W9)	0.960	0.000	0.000	0.000	0.000
Valley Oak Forest (V3)	12.580	0.000	0.000	0.000	0.000
Valley Oak Savanna (V)	9.000	0.000	0.000	0.000	0.000

### 3. Funding



The revenues and expenditures that occurred for the Calendar Year 2017 include payments of SJMSCP mitigation fees, other revenues (e.g. accumulated interest remitted and SJCOG, Inc. account accumulated interest) and expenditures related to the plan. In 2017, the revenue total was **\$22,377,355** and expenditure total was **\$4,509,026**. The cash balance of the SJMSCP as of December 31, 2017 was just over **\$17,868,329** with some funds earmarked (\$1,043,025) for a closed transaction endowment fund.

The SJMSCP endowment accounts set aside for long term management, enhancements and monitoring of the easements in perpetuity totals **\$42.863,363** as of December 2017.

### 4. Implementation

In the 2017 calendar year, SJCOG, Inc. staff worked on various matters under the SJMSCP including:

1. San Joaquin County Agricultural Building Permit Processing
2. Change of Bay Delta conservation Plan (BDCP) to CalWater Fix Project & Eco Restore Program
3. City of Stockton Fee Collection
4. Date-Certain Mitigation / 500 Acre Cap Calculations
5. Project permitting by Jurisdictions Outside the SJMSCP